



Fisheries and Oceans
Canada

Pêches et Océans
Canada

Canadian
Coast Guard

Garde côtière
canadienne

Notices to Mariners

Edition No. 09/2025
September 26, 2025



Safety First, Service Always

Monthly Western Edition

Canada 

Notices to Mariners – Monthly Western Edition
Edition No. 09/2025

Aussi disponible en français :
Avis aux navigateurs – Édition mensuelle de l'Ouest
Édition n° 09/2025

Published under the Authority of:

Canadian Coast Guard Programs
Aids to Navigation and Waterways
Fisheries and Oceans Canada
Montreal, QC H2Y 2E7

For more information, contact DFO.Notmar-Notmar.MPO@dfo-mpo.gc.ca.

© His Majesty the King in Right of Canada,
as represented by the Minister of Fisheries, Oceans
and the Canadian Coast Guard, 2025.

Cat. No. Fs152-9E-PDF (Electronic PDF, English)
ISSN 2817-0253

Cat. No. Fs152-9F-PDF (Electronic PDF, French)
ISSN 2817-0261

A web version is available here:

[Notices to Mariners – Monthly Editions](#) (English)

[Avis aux navigateurs – Publications mensuelles](#) (French)

Explanatory Notes – Notices to Mariners (NOTMAR)

Geographical positions refer directly to the graduations of the largest scale Canadian Hydrographic Service chart (unless otherwise indicated).

Bearings refer to the true compass and are measured clockwise from 000° (North) clockwise to 359°; those relating to lights are from seaward.

Visibility of lights is that in clear weather.

Depths - The units used for soundings (metres, fathoms or feet) are stated in the title of each chart.

Elevations are normally given above Higher High Water, Large Tide (unless otherwise indicated).

Distances may be calculated as follows:

- 1 nautical mile = 1,852 metres (6,076.1 feet)
- 1 statute mile = 1,609.3 metres (5,280 feet)
- 1 metre = 3.28 feet

Temporary and Preliminary Notices to Mariners – Section 1A of *Notices to Mariners*

These notices are indicated by a (T) or a (P), respectively. Please note that nautical charts are not amended by the Canadian Hydrographic Service for temporary (T) and preliminary (P) notices. It is recommended that mariners chart these corrections in pencil. For the list of charts affected by (T) & (P) notices, please refer to the current [Notices to Mariners - Monthly Summary of Temporary and Preliminary Notices](#) publication.

Suggestions and Corrections Form

This form is specifically for suggestions and corrections to Notices to Mariners publications. It is available [online](#) and also in [fillable PDF format](#) included with the monthly publication ZIP file.

To submit comments and suggestions on possible improvements to the various publications and services: DFO.Notmar-Notmar.MPO@dfo-mpo.gc.ca.

To report chart discrepancies and/or corrections to the *Canadian Sailing Directions* booklets: Fill out the [Marine Information Reporting Form](#) and/or email chsinfo@dfo-mpo.gc.ca.

To report emergencies or navigational hazards: [Contact your nearest MCTS centre](#)

- VHF channel 16 (156.8 MHz)
- MF/HF frequency 2182 kHz/4125 kHz (where available)
- *16 on a cellphone (where available)

NOTMAR Website – Monthly Editions, Chart Corrections and Chart Patches

The NOTMAR website allows users to access the [monthly publications](#), [chart corrections](#), and [chart patches](#).

Users can subscribe for free to the [email notification service](#) to receive notifications when charts of interest are updated, including their patches, as well as when a new Monthly Edition of *Notices to Mariners* is published.

In addition, the monthly publication and related files to download, such as chart patches, can be obtained all together through the download of a single ZIP file.

Explanatory Notes – Canadian Hydrographic Service (CHS)

Chart Corrections – Section 2 of *Notices to Mariners*

Corrections to nautical charts will be listed in numerical order by chart number. Each chart correction listed applies only to that particular chart. Related charts, if any, will have their own specific correction listed separately.

Users should also refer to CHS *Chart 1: Symbols, Abbreviations and Terms* for additional information pertaining to the correction of charts.

The illustration below describes the elements that will comprise a typical Section 2 chart correction:

	Chart Number	Chart Title	Chart latest new edition date	Horizontal Chart Datum	Last Correction
Weekly Chart Correction Date	1312	Lac Saint-Pierre - New Edition - 10-MAY-2019 - NAD 1983			
	05-AUG-2022				LN/D. 24-SEP-2021
	Amend			46°03'32.4"N 073°03'21.6"W	
		(See Chart 1 P16)		(Q2022035) LL(2177) DFO(6410690-01)	
	Chart Action	Chart 1 Reference No.	CCG Reference No.	List of Lights No.	CHS Reference No.

The last correction number is identified with the **LN/D** or **Last Notice to Mariners Number / Date**.

Mariners are advised that only the most critical changes that directly affect safety to navigation are issued in "Section 2 – Chart Corrections." This limitation is required to ensure that charts remain as clear and easy to read as possible. As a result, mariners may see minor discrepancies of a non-critical nature between information in official publications. For example, a small change in the nominal range or focal height of a light may not result in the production of a chart correction in *Notices to Mariners*, but may result in a correction in the [List of Lights, Buoys and Fog Signals](#) publication.

Note: In the case of a discrepancy between information provided on CHS charts relating to aids to navigation, and the *List of Lights, Buoys and Fog Signals* publication, the latter shall be deemed as containing the most up-to-date information.

Explanatory Notes – Marine Communications and Traffic Services (MCTS)

Navigational Warnings / Notices to Shipping

The Canadian Coast Guard (CCG) is implementing a number of changes to the aids to navigation system in Canada.

These changes are advertised as Navigational Warnings, formerly called Notices to Shipping¹, that are broadcast by the CCG, and are then followed up with Notices to Mariners, then charts are updated by hand correction, reprints or new editions.

Mariners are advised that all relevant Navigational Warnings (NAVWARN) should be kept until superseded by Notices to Mariners or through revised charts issued by the Canadian Hydrographic Service (CHS).

NAVWARN are accessible on the applicable regional page on the [CCG Navigational Warnings](#).

CHS is reviewing the impact of these changes with CCG and together are preparing an action plan on the issuing of chart revisions.

For further information, contact your regional NAVWARN Issuing Desk.

Western Region Prince Rupert MCTS Centre “P” Series NAVWARN Canadian Coast Guard Bag 4444 Prince Rupert, BC V8J 4K2 Telephone: 250-627-3070 Email: NAVWARN.MCTSPrinceRupert@innav.gc.ca	Arctic Region *Iqaluit MCTS Centre <i>Operational from approximately mid-May until late December.</i> “A” Series NAVWARN Canadian Coast Guard P.O. Box 189 Iqaluit, NU X0A 0H0 Telephone: 867-979-5269 Facsimile: 867-979-4264 Email: NAVWARN.MCTSIqaluit@innav.gc.ca
--	---

*Service available in English and in French.

¹ The expression “Notice to Shipping” was changed to “Navigational Warning” in January 2019.

Table of Contents

Section 1: General and Safety Information	1
*505/23 Canadian Hydrographic Service – Magnetic Declination Calculations	1
*1207/23 Canadian Hydrographic Service – Inappropriate Geographical Names Review Process	1
*208/24 West Coast Haida Gwaii – Voluntary Protection Zone for Shipping	1
*1105/24 Transport Canada – British Columbia North Coast Waterway Management Guidelines	2
*506/25 Anguniaqvia Niqiyuam Marine Protected Areas (ANMPA), Tarium Nirjutait Marine Protected Areas (TNMPA) and Beluga and Bowhead Whale Protection: Voluntary Avoidance and Slowdown Areas	4
*901/25 Canadian Hydrographic Service – Electronic Navigational Charts	7
*903/25 Baynes Sound – Aids to Navigation Permanently Discontinued	9
Section 1A: Temporary and Preliminary Notices	10
Reminder – Comment Period for Active Preliminary Notices	10
Section 2: Chart Corrections	11
Section 3: Radio Aids to Marine Navigation Corrections	21
*905/25 Radio Aids to Marine Navigation 2025 (Atlantic, St. Lawrence, Great Lakes, Lake Winnipeg, Arctic and Pacific)	21
Section 4: Canadian Sailing Directions Corrections	23
Section 5: List of Lights, Buoys and Fog Signals Corrections	24

Numerical Index of Canadian Charts Affected

This numerical index lists all nautical charts mentioned in this monthly edition of Notices to Mariners. Only charts appearing in Section 2 of this publication require a chart correction. The appearance of charts in all other sections, particularly those related to the correction of other nautical publications, is included here for reference.

Chart No.	Pages	Chart No.	Pages	Chart No.	Pages
3410	11				
3419	11				
3441	11				
3442	11				
3473	12				
3478	12				
3493	13				
3496	14				
3513	14				
3526	15				
3527	9 , 16 , 24				
3538	16				
3670	16				
3671	16				
3673	16				
3800	24				
3893	16 , 17 , 24				
3895	24				
3938	18				
3939	18 , 19				
7621	20				
7665	20				

Section 1: General and Safety Information

***505/23 Canadian Hydrographic Service – Magnetic Declination Calculations**

(Recurrent publication of notice *505/23, originally published in the *Notices to Mariners – Monthly Western Edition 05/2023* publication.)

Mariners are advised that CHS has adopted the harmonized World Magnetic Model (WMM), as found on the NCEI/NOAA website. Old compass rose declination information on CHS navigational products can be updated using the [Magnetic Declination Estimated Value](#) website. While the differences in the model declinations are small each year, they can become more significant over a large period of time.

***1207/23 Canadian Hydrographic Service – Inappropriate Geographical Names Review Process**

(Recurrent publication of notice *1207/23, originally published in the *Notices to Mariners – Monthly Western Edition 12/2023* publication.)

The records of the Canadian Hydrographic Service could contain geographical names that may be considered inappropriate, offensive and derogatory. Geographical naming authorities are in the process of addressing many offensive place names, the review process is underway. For more information, about inappropriate geographical names, please see the [following announcement](#).

***208/24 West Coast Haida Gwaii – Voluntary Protection Zone for Shipping**

(Recurrent publication of notice *208/24, originally published in the *Notices to Mariners – Monthly Western Edition 02/2024* publication.)

Reference: Notice *1105/21 is cancelled.

Voluntary Protection Zone for Shipping, western shore of Haida Gwaii (formerly Queen Charlotte Islands)

Haida Gwaii's remote location, rugged coastline, variable sea and weather conditions, and rich ecological and cultural heritage make it vulnerable to the potential for pollution from shipping breakdowns and accidents. Increasing the distance vessels travel offshore can increase the amount of time available to address propulsion, steering or other issues, and the likelihood of a towing vessel being able to respond to a vessel in distress or drifting. This in turn reduces the risk of grounding and oil spills.

A Voluntary Protection Zone for Shipping on the western shore of Haida Gwaii is currently in effect. In the Voluntary Protection Zone, commercial vessels of 500 gross tonnage or greater are requested to observe a minimum distance of 50 nautical miles from the western shore of Haida Gwaii with the following exemptions:

Exemptions from requested 50 nm distance:

- Cruise vessels, which are asked to observe a minimum 12 nm distance from shore;
- Vessels transiting from Alaska to British Columbia or Washington State, or vice versa, through the Voluntary Protection Zone are asked to observe a distance of at least 25 nm from shore
- No minimum distance is requested for tugs and barges (including pushing and towing alongside) or vessels engaged in commercial fishing.
- Vessels to which this bulletin applies are not required to observe requested minimum distances if doing so may compromise navigational, vessel, passenger or cargo safety.

The Voluntary Protection Zone for Shipping coordinates are:

54° 15.436' N	133° 04.788' W
54° 17.572' N	134° 02.484' W
54° 13.614' N	134° 19.427' W
54° 11.786' N	134° 30.841' W
53° 44.036' N	134° 32.677' W
53° 11.118' N	134° 16.412' W
52° 18.483' N	133° 20.917' W
51° 24.590' N	132° 04.081' W
51° 56.158' N	131° 01.830' W

Vessels are requested to adhere to these distances on a voluntary basis and only when it does not jeopardize the safety of navigation, the vessel, the persons onboard, and the cargo.



***1105/24 Transport Canada – British Columbia North Coast Waterway Management Guidelines**

(Recurrent publication of notice *1105/24, originally published in the *Notices to Mariners – Monthly Western Edition* 11/2024 publication.)

Reference: Notice *1004/23 is cancelled.

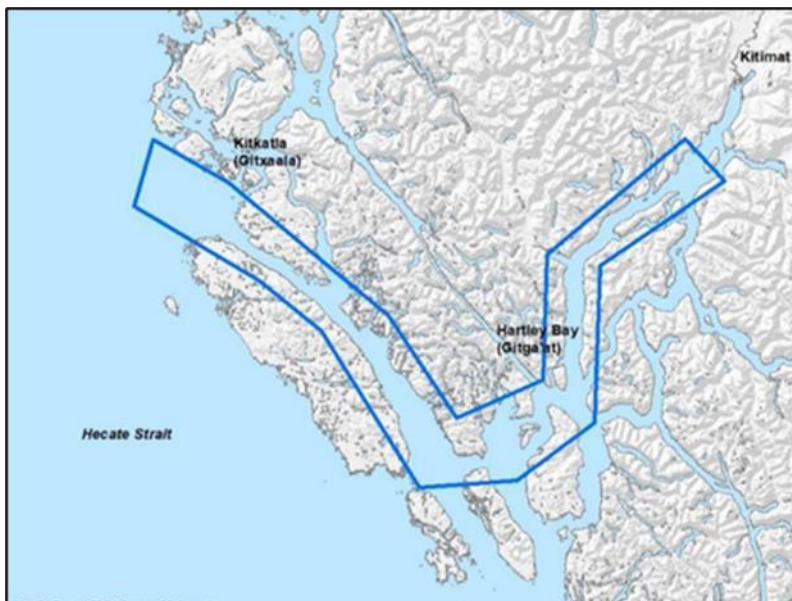
The North Coast Waterway Management Guidelines are voluntary guidelines that aim to improve safety on the water by reducing conflicts between First Nations' marine use activities, such as fishing and shoreline harvesting, and commercial vessels on the shipping route between Kitimat and Browning Entrance. The guidelines came into effect on September 1, 2022, and will be reviewed from time to time.

The guidelines apply to all vessels navigating on the route between Kitimat and Browning Entrance, on the north coast of British Columbia. This area includes:

- Douglas Channel
- Wright Sound
- Lewis Passage
- Otter Channel
- Nepean Sound, and
- Principe Channel

The complete guidelines document is available at [British Columbia North Coast Waterway Management Guidelines](#).

Nothing in these guidelines replaces or changes how we apply any Canadian or international laws or regulations, including the Collision Regulations. Furthermore, nothing in these guidelines prevents or limits the master or pilot of a ship from making any decisions to protect the vessel, the crew, or the marine environment.

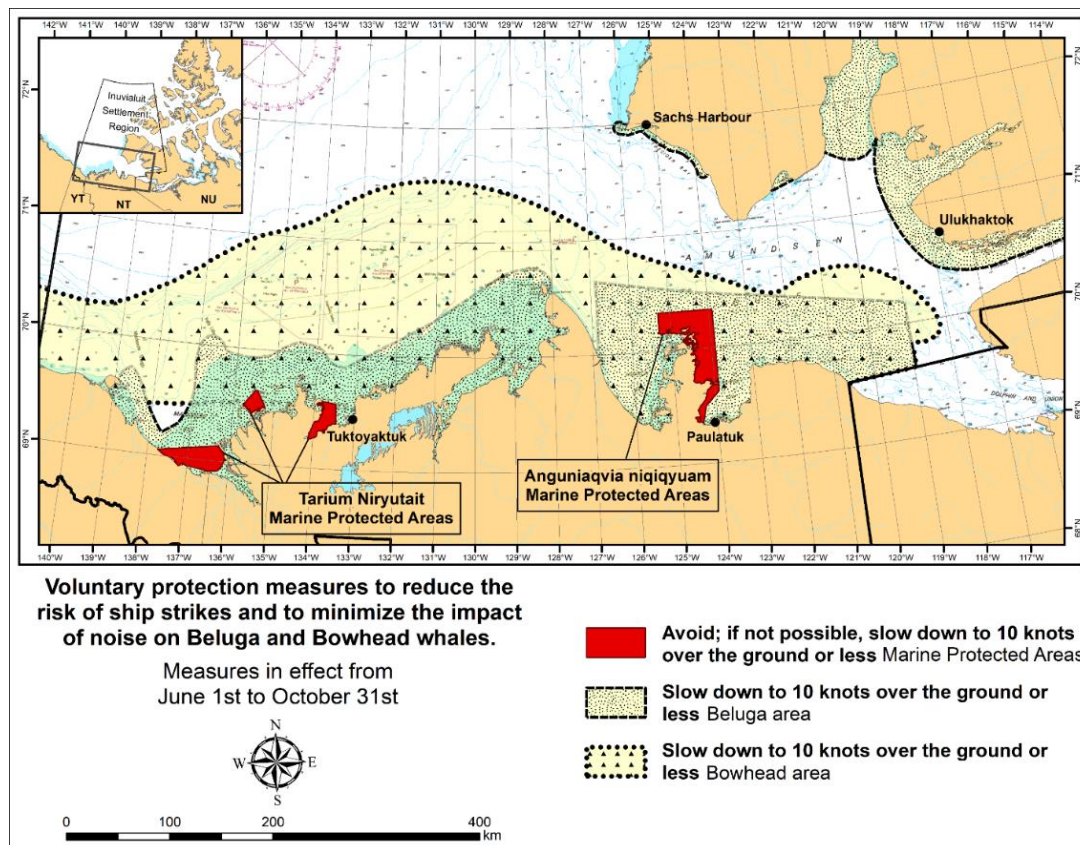


The guidelines include information for:

- all vessels that covers:
 - inshore safety zones
 - routing measures
 - speed reductions
 - guidelines for meeting and passing
 - a special operating area in Wright Sound, and
 - guidelines in case of a mechanical or electrical breakdown
- large commercial ships, including bulk carriers, general cargo vessels, liquid bulk vessels, and passenger vessels
- tugs and barges, and
- vessels operating in First Nations Areas of Concern where you must pay special attention to make sure local community users can transit and use the area safely.

***506/25 Anguniaqvia Niqiqyuam Marine Protected Areas (ANMPA), Tarium Niryutait Marine Protected Areas (TNMPA) and Beluga and Bowhead Whale Protection: Voluntary Avoidance and Slowdown Areas**

(Recurrent publication of notice *506/25, originally published in the *Notices to Mariners – Monthly Western Edition 05/2025* publication.)



The two established Marine Protected Areas (MPAs) in Canada's Western Arctic are located within the Inuvialuit Settlement Region, as such all activities must comply with the [Inuvialuit Final Agreement](#). Protection and preservation of Arctic wildlife, the environment and biological productivity is one of the principles of the Inuvialuit Final Agreement and it is this principle that led the Inuvialuit Regional Corporation and the Inuvialuit Game Council to initiate establishment of the Western Arctic MPAs. The waters in and near the MPAs, and the offshore marine habitats of the Beaufort Sea and Amundsen Gulf, are important summer foraging habitats and travel routes used seasonally (May-October) by the Eastern Beaufort Sea beluga stock, and the Bering-Chukchi-Beaufort bowhead population.

REGULATORY PROTECTION MEASURES

All whale species are protected under the Marine Mammal Regulations, pursuant to the *Fisheries Act* requiring immediate reporting of accidental contact between a vehicle or fishing gear and a marine mammal to the Minister. Within the boundaries of the MPAs, a general prohibition is set out in the Regulations, pursuant to the *Oceans Act* prohibiting activities that disturb, damage, destroy or remove any living marine organism from the areas. Any accident, including those with a marine mammal within the TNMPA must be reported within two hours after its occurrence, to the Canadian Coast Guard. For marine accidents such as collisions that occur within the ANMPA or outside the MPAs or for any situation involving a marine mammal that is dead or in trouble, report to the Fisheries and Oceans Canada, Inuvik office at (867) 777-7500.

For more information on the ANMPA and TNMPA, including local contacts and species-specific minimum distances, see Section A2 - Notices 5 and 5A.3 of the *Notices to Mariners Annual Edition*.

VOLUNTARY PROTECTION MEASURES

Voluntary measures are in effect from June 1st to October 31st. See map above.

These measures apply to merchant vessels, cruise ships, small vessels and adventure craft within the boundaries of the MPAs and the additional identified areas to prevent collisions with whales and to mitigate the underwater noise generated by the vessels. These measures should only be taken when they will not jeopardize navigational safety.

Avoid (red area): To reduce the risk of underwater noise disturbance and collisions with whales within the MPAs, vessels should avoid transiting through the MPAs if possible. If passage through this area is necessary, vessels should slow down to a speed not exceeding 10 knots over the ground and post additional lookouts such as a marine mammal observer in order to increase the chances of seeing the whales and thus taking necessary measures to avoid them. If bypassing the whales is not possible, slow down and wait for the animals to move away to a distance greater than 400 metres (0.215 nautical miles) before resuming original speed not exceeding 10 knots over the ground. It is more difficult to see the animals in rain, fog, or in rough sea states, therefore increased caution is recommended.

Slow down to 10 knots over the ground or less (yellow stippled areas): To reduce the risk of underwater noise disturbance and collisions with whales within these areas, it is recommended that vessels should slow down to a speed not exceeding 10 knots over the ground, navigate within the marked community supply channels and post additional lookouts.

These voluntary measures are secondary to rights under the [Inuvialuit Final Agreement](#).

MPA Coordinates

The Tarium Niryutait Marine Protected Areas consist of three areas of the Mackenzie Bay: Okeevik, Kittigaryuit and Niaqunnaq. The three areas are bounded by straight lines and lines following the low water line which connect the following geographical coordinates [Universal Transverse Mercator (UTM) North America Datum 1983 (NAD 83)]

Okeevik Sub Area		
Point	Latitude (North)	Longitude (West)
1	69° 38' 19"	135° 25' 09"
2	69° 38' 03"	135° 25' 11"
3	69° 37' 46"	135° 24' 52"
4	69° 29' 49"	135° 12' 49"
5	69° 30' 45"	135° 16' 56"
6	69° 29' 26"	135° 18' 53"
7	69° 29' 23"	135° 19' 06"
8	69° 28' 07"	135° 20' 25"
9	69° 27' 36"	135° 24' 25"
10	69° 25' 51"	135° 32' 27"
11	69° 26' 32"	135° 34' 54"
12	69° 28' 21"	135° 35' 24"
13	69° 28' 35"	135° 36' 40"
14	69° 28' 39"	135° 37' 58"
15	69° 30' 34"	135° 45' 54"
16	69° 35' 18"	135° 35' 42"
17	69° 36' 00"	135° 22' 10"
18	69° 34' 40"	135° 20' 09"
19	69° 34' 00"	135° 20' 09"
20	69° 34' 00"	135° 27' 39"
21	69° 36' 00"	135° 27' 39"
22	69° 27' 00"	135° 31' 11"
23	69° 27' 00"	135° 34' 45"

Kittigaryuit Sub Area		
Point	Latitude (North)	Longitude (West)
1	69° 35' 10"	133° 48' 26"
2	69° 34' 00"	133° 28' 00"
3	69° 23' 37"	133° 26' 40"
4	69° 20' 34"	133° 40' 37"
5	69° 19' 05"	133° 42' 21"
6	69° 19' 01"	133° 42' 31"
7	69° 20' 39"	133° 43' 20"
8	69° 16' 42"	133° 54' 54"
9	69° 15' 20"	134° 06' 53"
10	69° 16' 33"	134° 05' 56"
11	69° 20' 42"	134° 02' 44"
12	69° 24' 00"	133° 59' 10"
13	69° 24' 34"	133° 53' 49"
14	69° 28' 21"	133° 48' 15"
15	69° 28' 02"	133° 50' 59"
16	69° 33' 20"	133° 47' 29"
17	69° 34' 33"	133° 47' 42"
18	69° 32' 55"	133° 51' 09"
19	69° 32' 56"	133° 51' 54"
20	69° 33' 46"	133° 55' 48"
21	69° 33' 46"	133° 55' 31"

Niaqunnaq Sub Area		
Point	Latitude (North)	Longitude (West)
1	69° 08' 00"	136° 16' 44"
2	69° 04' 25"	136° 07' 45"
3	69° 03' 43"	136° 07' 08"
4	69° 01' 19"	136° 04' 45"
5	69° 01' 14"	136° 04' 45"
6	69° 00' 57"	136° 05' 42"
7	69° 00' 12"	136° 07' 08"
8	68° 57' 00"	136° 10' 00"
9	68° 55' 00"	136° 15' 00"
10	68° 54' 22"	136° 31' 50"
11	68° 55' 00"	136° 38' 33"
12	68° 56' 15"	137° 00' 41"
13	68° 56' 29"	137° 03' 03"
14	68° 55' 48"	137° 11' 00"
15	68° 57' 50"	137° 16' 40"
16	68° 59' 20"	137° 21' 30"
17	69° 03' 09"	137° 44' 54"

The Anguniagvia nqiqyuam Marine Protected Areas consist of two areas in Darnley Bay and Amundsen Gulf in the Beaufort Sea: Zone 1 and Zone 2. The areas consist of the seabed, the subsoil to a depth of five metres and the water column, including the sea ice. The two areas are bounded by straight lines and lines following the low water line which connect the following geographical coordinates [Universal Transverse Mercator (UTM) North America Datum 1983 (NAD 83)].

Zone 1		
Point	Latitude (North)	Longitude (West)
A	69° 21' 07.8"	124° 21' 32.0" approx
B	70° 12' 00.0" approx	124° 31' 55.2"
C	70° 08' 22.0"	124° 41' 45.0" approx
D	70° 09' 09.9"	124° 57' 42.0" approx
E	70° 09' 13.0" approx	125° 05' 28.6"
F	70° 09' 13.2"	125° 17' 53.0"
G	70° 20' 00.0"	125° 17' 53.0"
H	70° 20' 00.0"	123° 54' 17.5"
I	69° 37' 20.6"	123° 54' 17.5"
J	69° 30' 00.0"	124° 15' 34.7"

Zone 2		
Point	Latitude (North)	Longitude (West)
K	70° 04' 15.8"	124° 41' 51.0" approx
L	70° 04' 48.6"	124° 41' 54.0" approx
M	70° 02' 12.9"	124° 35' 23.0" approx
N	70° 02' 12.9"	124° 35' 29.0" approx

***901/25 Canadian Hydrographic Service – Electronic Navigational Charts**

S-57 ENC Number	Chart Title	ENC Compilation Scale	Published
New Charts			
CA53MLGA (Edn 1.000)	Port4400N07640W	1:6 000	2025-09-19
CA53NLGA (Edn 1.000)	Port4410N07640W	1:6 000	2025-09-19
CA53NLHA (Edn 1.000)	Port4410N07630W	1:6 000	2025-09-19
CA53PLGA (Edn 1.000)	Port4420N07640W	1:6 000	2025-09-19
CA53PLHA (Edn 1.000)	Port4420N07630W	1:6 000	2025-09-19
CA53PLJA (Edn 1.000)	Port4420N07620W	1:6 000	2025-09-19
CA53PLKA (Edn 1.000)	Port4420N07610W	1:6 000	2025-09-19
CA53PLLA (Edn 1.000)	Port4420N07600W	1:6 000	2025-09-19
CA53QLHA (Edn 1.000)	Port4430N07630W	1:6 000	2025-09-19
CA53QLJA (Edn 1.000)	Port4430N07620W	1:6 000	2025-09-19
CA53QLKA (Edn 1.000)	Port4430N07610W	1:6 000	2025-09-19
CA53QLLA (Edn 1.000)	Port4430N07600W	1:6 000	2025-09-19
CA53QLMA (Edn 1.000)	Port4430N07590W	1:6 000	2025-09-19
CA53RLLA (Edn 1.000)	Port4440N07600W	1:6 000	2025-09-19
CA53RLMA (Edn 1.000)	Port4440N07590W	1:6 000	2025-09-19
CA53RLNA (Edn 1.000)	Port4440N07580W	1:6 000	2025-09-19
CA53SLNA (Edn 1.000)	Port4450N07580W	1:6 000	2025-09-19
CA53SLPA (Edn 1.000)	Port4450N07570W	1:6 000	2025-09-19
CA53TLNA (Edn 1.000)	CA53TLNA	1:6 000	2025-09-19
CA53TLPA (Edn 1.000)	Port4460N07570W	1:6 000	2025-09-19
CA53TLQA (Edn 1.000)	Port4460N07560W	1:6 000	2025-09-19
CA53TLRA (Edn 1.000)	Port4460N07550W	1:6 000	2025-09-19
CA53ULQA (Edn 1.000)	Port4470N07560W	1:6 000	2025-09-19
CA53ULRA (Edn 1.000)	Port4470N07550W	1:6 000	2025-09-19
CA53ULSA (Edn 1.000)	Port4470N07540W	1:6 000	2025-09-19
CA53VLSA (Edn 1.000)	Port4480N07540W	1:6 000	2025-09-19
CA571563 (Edn 1.000)	CA571563	1:2 000	2025-09-05
CA571564 (Edn 1.000)	CA571564	1:6 000	2025-09-05
CA571565 (Edn 1.000)	CA571565	1:6 000	2025-09-05
CA571567 (Edn 1.000)	CA571567	1:6 000	2025-09-05
CA571568 (Edn 1.000)	CA571568	1:11 000	2025-09-05
CA571569 (Edn 1.000)	CA571569	1:11 000	2025-09-05
CA571570 (Edn 1.000)	CA571570	1:11 000	2025-09-05
CA571571 (Edn 1.000)	CA571571	1:11 000	2025-09-05
CA571574 (Edn 1.000)	CA571574	1:11 000	2025-09-05

New Editions			
CA44JN4A (Edn 5.000)	Transit4700N07100W	1:22 500	2025-09-26
CA542M9A (Edn 5.000)	Port4540N07380W	1:6 000	2025-09-19
CA542MAA (Edn 3.000)	Port4540N07370W	1:6 000	2025-09-19
CA55WSSA (Edn 3.000)	CA55WSSA	1:11 000	2025-09-12
Charts Permanently Withdrawn			
CA473025	Grindstone Island to/à Carleton Island	Cancelled by CA573361	
CA473034	Summerland Group to/à Grindstone Island		
CA473035	Whaleback Shoal to/au Summerland Group	Cancelled by CA473275,CA473275,CA473275, CA473275	
CA473036	Carleton Island to/au Charity Shoal	Cancelled by CA473276,CA473276,CA473276, CA373496,CA373063,CA373063	
CA473275	Cardinal to/à Whaleback Shoal	Cancelled by CA573389,CA573389,CA573388, CA573388,CA473035,CA473035, CA473035,CA473035	
CA570101	Sooke Inlet to/à Parry Bay		
CA570138	Esquimalt Harbour	Cancelled by CA571563	
CA570214	Approaches to/Approches à Oak Bay		
CA570562	Victoria Harbour		
CA573388	Brockville Narrows	Cancelled by CA473275,CA473275,CA473275, CA473275	
CA573389	Prescott/Ogdensburg	Cancelled by CA473275,CA473275,CA473275, CA473275	
CA670655	Special Operations Chart, DND Jetty, Manor Pt		
CA670736	Esquimalt Graving Dock	Cancelled by CA570138,CA570138,CA570138, CA570138,CA570138,CA570138, CA570138,CA570138	
CA670740	Ogden Point	Cancelled by CA570562,CA570562,CA570562, CA570562,CA570562,CA570562, CA570562	

***903/25 Baynes Sound – Aids to Navigation Permanently Discontinued**

Reference chart: 3527

The following aids to navigation have been permanently discontinued:

Aid Name	LL #	Position
Courtenay River front range #1	5305.4	49° 40' 31.5"N 124° 57' 19.8"W
Courtenay River rear range #1	5305.5	49° 40' 30.4"N 124° 57' 15.9"W
Courtenay River starboard daybeacon #2	5306.3	49° 40' 51.7"N 124° 58' 36.4"W
Courtenay River front range #3	5306.4	49° 40' 52.3"N 124° 58' 33.6"W
Courtenay River rear range #3	5306.5	49° 40' 53.9"N 124° 58' 39.2"W
Courtenay River front range #4	5306.6	49° 40' 49.0"N 124° 58' 37.3"W
Courtenay River rear range #4	5306.7	49° 40' 48.1"N 124° 58' 34.7"W

(P2025-048 to 052, 055, 056)

Section 1A: Temporary and Preliminary Notices

Reminder – Comment Period for Active Preliminary Notices

No notices applicable for this edition.

Inland Waters

Temporary Notices

No notices applicable for this edition.

Preliminary Notices

No notices applicable for this edition.

Pacific Coast

Temporary Notices

No notices applicable for this edition.

Preliminary Notices

No notices applicable for this edition.

Section 2: Chart Corrections

3410 - Sooke Inlet to/à Parry Bay - New Edition - 17-MAY-2013 - World Geodetic System 1984

19-SEP-2025

LNLM/D. 06-SEP-2024

Add yellow ODAS/SADO lighted super-buoy FI (5) Y
(See Chart 1, Q58) 48°19'55.1"N 123°32'47.5"W

DFO(6205244-01)

Add private yellow ODAS/SADO lighted buoy FI (5) Y 20s
(See Chart 1, Q58) 48°16'16.7"N 123°35'18.4"W

DFO(6205286-01)

3419 - Esquimalt Harbour - New Edition - 13-DEC-2013 - World Geodetic System 1984

19-SEP-2025

LNLM/D. 11-OCT-2024

Add yellow ODAS/SADO lighted super-buoy FI (5) Y 20s
(See Chart 1, Q58) 48°25'31.5"N 123°26'16.7"W

DFO(6205244-02)

Add yellow ODAS/SADO lighted super-buoy FI (5) Y 20s
(See Chart 1, Q58) 48°26'32.0"N 123°26'28.5"W

DFO(6205244-03)

3441 - Haro Strait, Boundary Pass and/et Satellite Channel - New Edition - 01-JUL-2005 - NAD 1983

12-SEP-2025

LNLM/D. 11-JUL-2025

Add submarine cable joining 48°48'17.3"N 123°24'50.3"W
(See Chart 1, L30.1) 48°48'12.3"N 123°24'44.8"W
48°48'06.9"N 123°23'36.2"W
48°47'46.5"N 123°23'07.6"W
48°47'34.9"N 123°21'53.9"W
48°47'35.5"N 123°21'29.2"W
48°47'44.9"N 123°20'58.8"W
and 48°48'17.3"N 123°20'16.5"W
DFO(6205247-02)

3442 - North Pender Island to/à Thetis Island - New Edition - 01-JUL-2005 - NAD 1983

12-SEP-2025

LNLM/D. 11-JUL-2025

Add private yellow ODAS/SADO lighted can buoy FI (5) Y
(See Chart 1, Q58) 48°53'14.4"N 123°18'25.4"W

DFO(6205246-01)

Add submarine cable joining 48°48'47.2"N 123°19'13.8"W
(See Chart 1, L30.1) 48°48'42.2"N 123°19'38.2"W
48°48'29.8"N 123°20'00.0"W
48°47'44.9"N 123°20'58.8"W
48°47'35.5"N 123°21'29.2"W
48°47'34.9"N 123°21'53.9"W
48°47'46.5"N 123°23'07.6"W
48°48'06.9"N 123°23'36.2"W
48°48'12.3"N 123°24'44.8"W
48°48'38.2"N 123°25'09.8"W
48°48'55.3"N 123°25'49.5"W
48°49'42.3"N 123°27'04.5"W
48°49'55.3"N 123°27'31.6"W
48°50'04.3"N 123°27'44.0"W
48°50'17.8"N 123°28'05.8"W
48°50'18.4"N 123°28'11.8"W
and 48°50'15.6"N 123°28'18.8"W
DFO(6205247-01)

3473 - Active Pass - New Edition - 10-JAN-2020 - World Geodetic System 1984
12-SEP-2025

LNM/D. 11-JUL-2025

Add private yellow ODAS/SADO lighted can buoy FI (5) Y
(See Chart 1, Q58)

48°53'14.4"N 123°18'25.4"W

DFO(6205246-01)

3478 - Ganges Harbour and/et Long Harbour - New Edition - 12-JUL-2013 - NAD 1983
12-SEP-2025

LNM/D. 11-JUL-2025

Add submarine cable
(See Chart 1, L30.1)

joining 48°47'34.8"N 123°21'46.8"W
48°47'36.1"N 123°22'00.4"W
48°47'42.7"N 123°22'41.9"W
48°47'42.8"N 123°22'49.0"W
48°47'44.7"N 123°22'54.6"W
48°47'48.6"N 123°23'10.9"W
48°48'01.5"N 123°23'27.9"W
48°48'07.3"N 123°23'39.0"W
48°48'11.3"N 123°24'37.2"W
48°48'15.0"N 123°24'47.7"W
48°48'38.6"N 123°25'09.9"W
48°48'54.8"N 123°25'48.9"W
48°49'42.3"N 123°27'04.5"W
48°49'55.3"N 123°27'31.6"W
48°50'04.3"N 123°27'44.0"W
48°50'17.8"N 123°28'05.8"W
48°50'18.4"N 123°28'11.8"W
and 48°50'15.8"N 123°28'18.4"W

DFO(6205247-03)

3493 - Vancouver Harbour Western Portion/Partie Ouest - New Edition - 15-NOV-2019 - World Geodetic System 1984

19-SEP-2025

LNMD. 25-JUL-2025

Add	submarine cable	joining	49°18'31.7"N 123°10'10.8"W
	(See Chart 1, L30.1)		49°18'31.7"N 123°10'03.0"W
			49°18'32.8"N 123°09'55.9"W
			49°18'33.4"N 123°09'44.8"W
			49°18'32.4"N 123°09'40.1"W
			49°18'32.1"N 123°09'36.3"W
			49°18'32.6"N 123°09'31.0"W
			49°18'33.5"N 123°09'27.7"W
			49°18'47.7"N 123°09'13.8"W
			49°18'50.9"N 123°09'07.9"W
			49°18'53.7"N 123°08'31.3"W
			49°18'50.8"N 123°08'19.4"W
			49°18'47.6"N 123°08'15.6"W
			49°18'43.8"N 123°08'12.3"W
			49°18'35.8"N 123°08'03.8"W
			49°18'34.2"N 123°08'03.1"W
			49°18'25.7"N 123°07'54.6"W
			49°18'24.8"N 123°07'52.7"W
			49°18'16.9"N 123°07'40.4"W
			49°18'16.9"N 123°07'37.0"W
			49°18'16.6"N 123°07'35.2"W
			49°18'16.1"N 123°07'33.9"W
			49°18'14.4"N 123°07'30.9"W
			49°18'12.4"N 123°07'29.1"W
			49°18'09.2"N 123°07'24.0"W
			49°18'06.4"N 123°07'16.8"W
			49°18'05.6"N 123°07'06.8"W
			49°18'06.3"N 123°07'00.9"W
			49°18'06.1"N 123°06'58.8"W
			49°18'04.7"N 123°06'55.8"W
			49°18'02.8"N 123°06'53.7"W
			49°18'01.2"N 123°06'53.3"W
			49°17'59.2"N 123°06'53.3"W
			49°17'41.8"N 123°06'56.8"W
			49°17'38.5"N 123°06'57.7"W
			49°17'33.5"N 123°06'58.7"W
			49°17'30.2"N 123°06'56.3"W
			49°17'29.2"N 123°06'55.7"W
			49°17'27.5"N 123°06'56.2"W
			49°17'26.2"N 123°06'57.1"W
			49°17'25.3"N 123°06'57.5"W
			49°17'24.2"N 123°06'57.0"W
		and	49°17'23.0"N 123°06'55.4"W
			<i>DFO(6205283-01)</i>

3496 - Approaches to/Approches à Vancouver Harbour - New Chart - 29-MAR-2019 - World Geodetic System 1984

19-SEP-2025

LNMD. 11-APR-2025

Add	submarine cable (See Chart 1, L30.1)	joining 49°18'47.8"N 123°19'46.0"W 49°18'43.0"N 123°18'46.3"W 49°18'46.9"N 123°18'06.7"W 49°19'10.3"N 123°12'47.8"W 49°19'00.0"N 123°10'45.4"W 49°19'00.6"N 123°10'40.6"W 49°18'59.8"N 123°10'35.1"W 49°18'57.8"N 123°10'32.3"W 49°18'43.1"N 123°10'27.1"W 49°18'41.6"N 123°10'20.7"W 49°18'38.1"N 123°10'15.5"W 49°18'31.8"N 123°10'12.7"W 49°18'31.7"N 123°10'02.8"W 49°18'32.8"N 123°09'56.5"W 49°18'33.4"N 123°09'45.1"W 49°18'32.3"N 123°09'36.2"W 49°18'33.6"N 123°09'27.9"W 49°18'47.9"N 123°09'13.6"W 49°18'51.2"N 123°09'07.3"W and 49°18'52.6"N 123°08'48.0"W <i>DFO(6205283-01)</i>
-----	---	--

3513 - Strait of Georgia, Northern Portion/Partie Nord - New Edition - 29-OCT-1999 - NAD 1983

12-SEP-2025

LNMD. 09-MAY-2025

Delete	depth of 254 metres (See Chart 1, I10)	50°03'06.9"N 124°52'38.7"W <i>DFO(6205251-01)</i>
--------	---	--

3526 - Howe Sound - New Edition - 01-JUL-2005 - NAD 1983
19-SEP-2025

LNMD. 25-APR-2025

Add submarine cable
(See Chart 1, L30.1)

joining 49°24'00.6"N 123°25'46.6"W
49°23'58.5"N 123°25'37.2"W
49°23'56.2"N 123°25'27.6"W
49°23'55.0"N 123°25'25.5"W
49°23'51.7"N 123°25'23.0"W
49°23'47.2"N 123°25'21.5"W
49°23'34.0"N 123°25'27.7"W
49°22'51.8"N 123°25'44.4"W
49°21'57.6"N 123°26'02.0"W
49°21'45.0"N 123°25'55.0"W
49°21'40.4"N 123°25'57.0"W
49°21'35.4"N 123°26'08.6"W
49°21'34.9"N 123°26'16.3"W
49°21'17.5"N 123°26'32.3"W
49°20'37.1"N 123°26'44.4"W
49°20'22.5"N 123°26'42.8"W
49°20'15.9"N 123°26'34.3"W
49°20'09.8"N 123°26'18.7"W
49°19'59.5"N 123°25'42.3"W
49°19'55.7"N 123°25'20.9"W
49°19'46.0"N 123°24'41.8"W
49°18'56.6"N 123°20'55.6"W
49°18'50.0"N 123°20'16.9"W
49°18'42.7"N 123°18'44.8"W
49°18'46.5"N 123°18'07.3"W
49°18'58.8"N 123°15'19.6"W
49°19'10.3"N 123°12'47.7"W
49°19'03.5"N 123°11'36.2"W
49°19'00.1"N 123°10'45.9"W
49°19'00.5"N 123°10'40.9"W
49°18'59.8"N 123°10'35.0"W
49°18'57.8"N 123°10'32.2"W
49°18'53.9"N 123°10'31.1"W
49°18'42.8"N 123°10'27.1"W
49°18'41.8"N 123°10'21.0"W
49°18'38.2"N 123°10'15.5"W
49°18'34.5"N 123°10'14.6"W
49°18'32.0"N 123°10'12.9"W
49°18'31.6"N 123°10'12.2"W
49°18'31.6"N 123°10'03.2"W
49°18'32.0"N 123°10'00.3"W
49°18'32.8"N 123°09'56.0"W
49°18'32.9"N 123°09'50.9"W
49°18'33.3"N 123°09'44.9"W
49°18'32.3"N 123°09'40.1"W
49°18'32.1"N 123°09'35.9"W
49°18'32.5"N 123°09'31.1"W
49°18'33.5"N 123°09'27.7"W
49°18'35.0"N 123°09'26.7"W
49°18'47.8"N 123°09'13.8"W
49°18'51.1"N 123°09'07.5"W
49°18'53.9"N 123°08'31.2"W
49°18'50.8"N 123°08'19.3"W
49°18'47.8"N 123°08'15.4"W
49°18'45.0"N 123°08'13.6"W
and 49°18'36.9"N 123°08'04.8"W

DFO(6205283-01)

3527 - Baynes Sound - New Edition - 06-APR-2001 - NAD 1983

12-SEP-2025

LNMD. 28-FEB-2025

Add depth of 2.1 metres
(See Chart 1, I10)

49°29'12.6"N 124°39'30.5"W

DFO(6205255-01)

Add depth of 3 metres
(See Chart 1, I10)

49°29'22.8"N 124°39'05.0"W

DFO(6205255-02)

3538 - Desolation Sound and/et Sutil Channel - New Edition - 30-DEC-2005 - NAD 1983

12-SEP-2025

LNMD. 09-MAY-2025

Delete depth of 254 metres
(See Chart 1, I10)

50°03'06.9"N 124°52'38.7"W

DFO(6205251-01)

3670 - Broken Group - New Edition - 21-OCT-1994 - NAD 1983

19-SEP-2025

LNMD. 11-JUL-2025

Add marine farm
(See Chart 1, K48.2)

48°57'47.5"N 125°23'39.2"W

DFO(6205259-01)

3671 - Barkley Sound - New Edition - 04-NOV-2005 - NAD 1983

19-SEP-2025

LNMD. 11-JUL-2025

Add marine farm
(See Chart 1, K48.2)

48°57'47.5"N 125°23'39.2"W

DFO(6205259-01)

3673 - Clayoquot Sound, Tofino Inlet to/à Millar Channel - New Chart - 01-DEC-1995 - NAD 1983

19-SEP-2025

LNMD. 21-MAR-2025

Add marine farm
(See Chart 1, K48.2)

49°13'51.8"N 125°54'21.7"W

DFO(6205258-01)

3893 - Juskatla Narrows - New Chart - 13-JAN-1984 - NAD 1927

12-SEP-2025

LNMD. 30-MAY-2025

Affix patch

53°40'00.0"N 132°20'00.0"W

Download Patch - https://www.notmar.gc.ca/chsftp/patches/3893_6205263_1_202508141351.pdf

DFO(6205263-01)

3893 - Masset Inlet - New Chart - 13-JAN-1984 - NAD 1927

12-SEP-2025

LNMD. 30-MAY-2025

Affix patch

53°40'00.0"N 132°30'00.0"W

Download Patch - https://www.notmar.gc.ca/chsftp/patches/3893_6205263_2_202508141353.pdf

DFO(6205263-02)

Affix patch

53°40'00.0"N 132°20'00.0"W

Download Patch - https://www.notmar.gc.ca/chsftp/patches/3893_6205263_3_202508141356.pdf

DFO(6205263-03)

Affix patch

53°45'00.0"N 132°10'00.0"W

Download Patch - https://www.notmar.gc.ca/chsftp/patches/3893_6205263_4_202508141356.pdf

DFO(6205263-04)

Delete	depth of 1.1 metres (See Chart 1, I10)	53°39'31.5"N 132°40'29.6"W <i>DFO(6205263-05)</i>
Add	depth of 0.9 metres (See Chart 1, I10)	53°39'31.5"N 132°40'29.6"W <i>DFO(6205263-06)</i>
Delete	depth of 1.3 metres (See Chart 1, I10)	53°39'56.7"N 132°40'10.0"W <i>DFO(6205263-07)</i>
Add	depth of 1 metre (See Chart 1, I10)	53°39'56.4"N 132°40'10.4"W <i>DFO(6205263-08)</i>
Add	depth of 3.9 metres (See Chart 1, I10)	53°41'16.6"N 132°37'24.8"W <i>DFO(6205263-09)</i>
Add	depth of 2.6 metres (See Chart 1, I10)	53°35'25.9"N 132°28'11.9"W <i>DFO(6205267-01)</i>
Delete	depth of 1.5 metres (See Chart 1, I10)	53°36'02.8"N 132°27'42.5"W <i>DFO(6205267-02)</i>
Add	depth of 1.1 metres (See Chart 1, I10)	53°36'02.8"N 132°27'42.5"W <i>DFO(6205267-03)</i>
Add	depth of 2.3 metres (See Chart 1, I10)	53°34'04.9"N 132°28'54.3"W <i>DFO(6205267-04)</i>
Add	depth of 1.8 metres (See Chart 1, I10)	53°35'57.0"N 132°27'38.0"W <i>DFO(6205267-05)</i>
Add	depth of 2.1 metres (See Chart 1, I10)	53°33'54.6"N 132°28'50.5"W <i>DFO(6205267-06)</i>
Add	depth of 2 metres (See Chart 1, I10)	53°36'18.0"N 132°27'18.7"W <i>DFO(6205267-07)</i>
Add	depth of 1.7 metres (See Chart 1, I10)	53°34'00.7"N 132°28'48.4"W <i>DFO(6205267-08)</i>
Add	depth of 1.7 metres (See Chart 1, I10)	53°35'45.9"N 132°27'33.5"W <i>DFO(6205267-09)</i>
Add	depth of 1.8 metres (See Chart 1, I10)	53°36'59.9"N 132°27'29.2"W <i>DFO(6205267-10)</i>

3938 - Queens Sound to/à Seaforth Channel - New Edition - 15-APR-2016 - World Geodetic System 1984

12-SEP-2025

LNMD. 28-MAR-2025

Delete	private light F Y and radar reflector (See Chart 1, P1, S4)	52°08'44.8"N 128°05'02.8"W DFO(6205252-01)
Delete	pontoon (See Chart 1, F16)	joining 52°08'44.0"N 128°05'04.3"W 52°08'44.3"N 128°05'02.7"W 52°08'44.8"N 128°05'02.8"W 52°08'44.5"N 128°05'04.5"W and 52°08'44.0"N 128°05'04.3"W DFO(6205252-02)
Delete	pontoon (See Chart 1, F16)	between 52°08'44.3"N 128°05'09.9"W and 52°08'44.9"N 128°05'03.8"W DFO(6205252-03)
Add	pontoon (See Chart 1, F16)	between 52°08'44.2"N 128°05'09.9"W and 52°08'44.5"N 128°05'07.1"W DFO(6205252-04)
Add	pontoon (See Chart 1, F16)	joining 52°08'44.2"N 128°05'06.4"W 52°08'43.8"N 128°05'06.2"W 52°08'44.1"N 128°05'03.9"W 52°08'44.6"N 128°05'04.1"W and 52°08'44.2"N 128°05'06.4"W DFO(6205252-05)
Add	light F Y and radar reflector (See Chart 1, P1, S4)	52°08'44.5"N 128°05'04.3"W DFO(6205252-08)

3939 - Fisher Channel to/à Seaforth Channel and/et Dean Channel - New Edition - 01-AUG-2014 - World Geodetic System 1984

12-SEP-2025

LNMD. 28-MAR-2025

Delete	private light F Y and radar reflector (See Chart 1, P1, S4)	52°08'44.8"N 128°05'02.8"W DFO(6205252-01)
Delete	pontoon (See Chart 1, F16)	joining 52°08'44.0"N 128°05'04.3"W 52°08'44.3"N 128°05'02.7"W 52°08'44.8"N 128°05'02.8"W 52°08'44.5"N 128°05'04.5"W and 52°08'44.0"N 128°05'04.3"W DFO(6205252-02)
Delete	pontoon (See Chart 1, F16)	between 52°08'44.3"N 128°05'09.9"W and 52°08'44.9"N 128°05'03.8"W DFO(6205252-03)
Add	pontoon (See Chart 1, F16)	between 52°08'44.2"N 128°05'09.9"W and 52°08'44.5"N 128°05'07.1"W DFO(6205252-04)

Add	pontoon (See Chart 1, F16)	joining 52°08'44.2"N 128°05'06.4"W 52°08'43.8"N 128°05'06.2"W 52°08'44.1"N 128°05'03.9"W 52°08'44.6"N 128°05'04.1"W and 52°08'44.2"N 128°05'06.4"W DFO(6205252-05)
Add	light F Y and radar reflector (See Chart 1, P1, S4)	52°08'44.5"N 128°05'04.3"W DFO(6205252-08)
3939 - Shearwater - New Edition - 01-AUG-2014 - World Geodetic System 1984		
12-SEP-2025		LNMD. 28-MAR-2025
Delete	private light F Y and radar reflector (See Chart 1, P1, S4)	52°08'44.8"N 128°05'02.8"W DFO(6205252-01)
Delete	pontoon (See Chart 1, F16)	joining 52°08'44.0"N 128°05'04.3"W 52°08'44.3"N 128°05'02.7"W 52°08'44.8"N 128°05'02.8"W 52°08'44.5"N 128°05'04.5"W and 52°08'44.0"N 128°05'04.3"W DFO(6205252-02)
Delete	pontoon (See Chart 1, F16)	joining 52°08'44.1"N 128°05'10.1"W 52°08'44.8"N 128°05'03.9"W 52°08'45.0"N 128°05'04.0"W and 52°08'44.4"N 128°05'10.1"W DFO(6205252-03)
Add	pontoon (See Chart 1, F16)	joining 52°08'44.0"N 128°05'09.9"W 52°08'44.2"N 128°05'08.1"W 52°08'44.1"N 128°05'08.1"W 52°08'44.2"N 128°05'07.0"W 52°08'44.8"N 128°05'07.2"W 52°08'44.7"N 128°05'08.2"W 52°08'44.5"N 128°05'08.2"W and 52°08'44.4"N 128°05'10.1"W DFO(6205252-04)
Add	pontoon (See Chart 1, F16)	joining 52°08'44.2"N 128°05'06.4"W 52°08'43.8"N 128°05'06.2"W 52°08'44.1"N 128°05'03.9"W 52°08'44.6"N 128°05'04.1"W and 52°08'44.2"N 128°05'06.4"W DFO(6205252-05)
Add	light FI Y (See Chart 1, P1)	52°08'44.3"N 128°05'07.3"W DFO(6205252-06)
Add	light FI Y (See Chart 1, P1)	52°08'44.8"N 128°05'07.5"W DFO(6205252-07)
Add	light F Y and radar reflector (See Chart 1, P1, S4)	52°08'44.5"N 128°05'04.3"W DFO(6205252-08)

7621 - Amundsen Gulf - New Edition - 25-FEB-2022 - NAD 1983
12-SEP-2025

LN/D. 30-AUG-2024

Add	obstruction, depth unknown, Rep (2025) (See Chart 1, K40)	69°59'35.3"N 125°17'39.3"W <i>DFO(6605537-01)</i>
Add	obstruction, depth unknown, Rep (2025) (See Chart 1, K40)	69°58'57.3"N 125°15'46.3"W <i>DFO(6605537-02)</i>
Add	obstruction, depth unknown, Rep (2025) (See Chart 1, K40)	69°54'21.9"N 125°13'04.4"W <i>DFO(6605537-03)</i>
Add	obstruction, depth unknown, Rep (2025) (See Chart 1, K40)	69°54'22.4"N 124°59'45.0"W <i>DFO(6605537-04)</i>
Add	obstruction, depth unknown, Rep (2025) (See Chart 1, K40)	69°57'40.3"N 124°59'00.3"W <i>DFO(6605537-05)</i>

7665 - Franklin Bay and/et Darnley Bay - New Chart - 13-JUN-1986 - NAD 1927
12-SEP-2025

LN/D. 30-AUG-2024

Add	obstruction, depth unknown, Rep (2025) (See Chart 1, K40)	69°59'34.3"N 125°17'29.2"W <i>DFO(6605537-01)</i>
Add	obstruction, depth unknown, Rep (2025) (See Chart 1, K40)	69°58'56.5"N 125°15'37.6"W <i>DFO(6605537-02)</i>
Add	obstruction, depth unknown, Rep (2025) (See Chart 1, K40)	69°54'21.1"N 125°12'55.7"W <i>DFO(6605537-03)</i>
Add	obstruction, depth unknown, Rep (2025) (See Chart 1, K40)	69°54'21.4"N 124°59'36.5"W <i>DFO(6605537-04)</i>
Add	obstruction, depth unknown, Rep (2025) (See Chart 1, K40)	69°57'39.4"N 124°58'49.6"W <i>DFO(6605537-05)</i>

Section 3: Radio Aids to Marine Navigation Corrections

*905/25 Radio Aids to Marine Navigation 2025 (Atlantic, St. Lawrence, Great Lakes, Lake Winnipeg, Arctic and Pacific)

Page 2-16

AMEND AS FOLLOWS:

2.1.4 Les Escoumins, Québec

Les Escoumins MCTS Centre VHF Direction Finding Advisory Service

A VHF/DF advisory service is available to vessels in difficulty within range of the receiver sites located at Rivière-au-Renard, Cap-aux-Meules, Havre St-Pierre, Natashquan, Newport, ~~Pointe-Heath~~, **Anticosti**, Mont-Louis, Lac Daigle (Sept-Îles) and Grosses-Roches. Information concerning position, bearing and distance may be provided for use at the discretion of the user.

Page 2-16

AMEND AS FOLLOWS:

Table 2-7 - Les Escoumins MCTS/VCF - Ship/Shore Communications

Sites located at	Channels	Frequencies		Remarks
		Transmit	Receive	
...
Carleton 48°08'28"N 066°06'32"W	Ch16 Ch70 Ch85	-	-	Ch85: Facilities are available for connecting ships directly to the commercial telephone system on shore.
Newport 48°13'24"N 064°47'33"W	Ch16 Ch70 Ch84	-	-	VHF Direction Finding service is available. Ch84: Facilities are available for connecting ships directly to the commercial telephone system on shore.
Pointe-Heath 49°05'05"N 061°42'09"W Anticosti 49°12'00"N 061°45'15"W	Ch16 Ch70 Ch84	-	-	VHF Direction Finding service is available. Ch84: Facilities are available for connecting ships directly to the commercial telephone system on shore.
Mont-Louis 49°12'48"N 065°46'25"W	Ch14 Ch16 Ch26 Ch70	-	-	VHF Direction Finding service is available. Ch26: Facilities are available for connecting ships directly to the commercial telephone system on shore.
...

Page 2-19

AMEND AS FOLLOWS:

Table 2-8 - Les Escoumins MCTS/VCF - Broadcasts

Time UTC	Site	Frequency or Channel	Contents
...
Continuous	Forillon Carleton Natashquan Cap-aux-Meules	Ch21B (2021)	Radiotelephony (French followed by English) <ul style="list-style-type: none"> Weather for marine forecast areas 215, 216, 217, 218, 219, 220, 221, 301 and 302. Navigational warnings for the Gulf of St. Lawrence including the Magdalene Islands, the coast between Sept-Îles and Blanc Sablon, the southern shore of 66W eastward including the Baie des Chaleurs up to Miramichi beach. Ice Reports. Notices to Fish Harvesters (when available). Navigational warnings revising the position of every reported offshore exploration and exploitation vessel. Wave height forecast for marine forecast areas 215, 217, 219, 220, 221, 301 and 302.
	Pointe-Heath Anticosti Harrington Harbour	Ch25B (2025)	
	Newport Havre St-Pierre La Romaine	Ch83B (2083)	
Continuous	Lac Daigle Grosses-Roches Cap à l'Est	Ch21B (2021)	Radiotelephony (French followed by English) <ul style="list-style-type: none"> Weather for marine forecast areas 301, 302, 303, 304, 305 and 313. Navigational warnings for the Saguenay River and the St. Lawrence River from Île Blanche to a line from Mingan to Cap Gaspé including Port Menier and the western point of Anticosti Island. Ice information for the Saguenay River and the St. Lawrence River from Île Blanche to Cabot and Belle-Isle straits (when available). Notices to Fish Harvesters (when available).
	Mont-Louis Mont-Joli Sacré-Cœur	Ch83B (2083)	

Page 5-39

DELETE AS FOLLOWS:

Table 5-45 - Maritimes Region: Marine Weather Observations

Area Name	Area Name	Area Name	Area Name
Baccaro Point	Fundy Park	Lunenburg	Sable Island
Bas Caraquet	Gaspé Airport	Miscou Island	Sept-Îles Airport
Beaver Island	Grand Étang	Natashquan	St. Paul Island
Brier Island	Grand Manan	New Carlisle	Summerside
Bouctouche	Hart Island	North Cape	Sydney Airport
Cap Chat	Havre-Saint-Pierre Airport	Parrsboro	Tracadie
Cap d'Espoir	Heath Point (Anticosti)	Pointe-des-Monts	Western Head
Caribou Point	Îles aux Perroquets	Point Lepreau	Wreckhouse
Charlo	Îles-de-la-Madeleine Airport	Port aux Basques	Yarmouth Airport
East Point	Ingonish Beach	Port Menier (Anticosti)	-
Eskasoni	Kouchibouguac	Rivière-la-Madeleine	-

Section 4: Canadian Sailing Directions Corrections

The following **Canadian Sailing Directions** volumes have recently been updated on the [Canadian Hydrographic Service website](#).

No.	Title
Atlantic Coast	
ATL 108	Gulf of St. Lawrence (Southwest Portion)
Central Canada	
CEN 308	Rideau Canal and Ottawa River

Each volume includes a section entitled “Record of Changes” which lists all updates that are incorporated during the current calendar year.

Section 5: List of Lights, Buoys and Fog Signals Corrections

The amendments are **highlighted** and deletions are **crossed out**. For general and region-specific information on the List of Lights, click on the following links: [Newfoundland and Labrador Coast](#), [Atlantic Coast](#), [Inland Waters](#) and [Pacific Coast](#).

No.	Name	Position ----- Latitude N. Longitude W.	Light Characteristics	Focal Height in m. above water	Nomi- nal Range	Description ----- Height in meters above ground	Remarks ----- Fog Signals
-----	------	--	--------------------------	--	-----------------------	--	---------------------------------

PACIFIC COAST

NORTHERN STRAIT OF GEORGIA (LL 447.5 – 510)

505 G5547	Courtenay River range						Delete from list.
506 G5547.1							Delete from list.
							Chart:3527 Edn 09/25 (P25-053, 054)

HAIDA GWAI (LL 768.6 – 812)

791	Rose Point light and bell buoy C26	N. of point. 54 13 42.1 131 38 37.0	Fl	R	4s	Red, marked "C26".	Year round.	Chart:3800 Edn 09/25 (P25-041)
795.6	Masset Inlet light buoy C39	SE. of Sloop Islet. 53 44 48.2 132 14 35.4	Fl	G	4s	Green, marked "C39".	Year round.	Chart:3893 Edn 09/25 (P25-043)
796.3	Richards Island light buoy C41	Marking Koutz Rock, off Juskatla Inlet. 53 40 59.0 132 20 51.2	Fl	G	4s	Green, marked "C41".	Year round.	Chart:3893 Edn 09/25 (P25-040)
802	Smyth Passage light buoy C56	Virago Sound, entrance to Naden Harbour. 54 04 02.9 132 32 03.0	Fl	R	4s	Red, marked "C56".	Year round.	Chart:3895 Edn 09/25 (P25-044)